

# Social Cues

private lounges

Available To Anyone Any Time Any Day

Discover a New Perspective  
on Going Out



SC The Garden – E. Williamsburg

Size: 1700SF | Max Capacity: 60 guests





SC B&G – E. Williamsburg

Size: 1200SF | Max Capacity: 60 guests





# SC Wynwood – Bushwick

Size: 1100SF | Max Capacity: 50 guests





SC B.S.A. – E. Williamsburg

Size: 900SF | Max Capacity: 40 guests

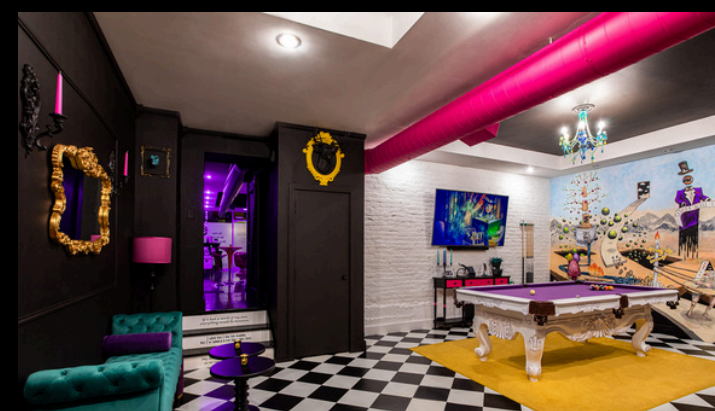






# Surreal – Clinton Hill

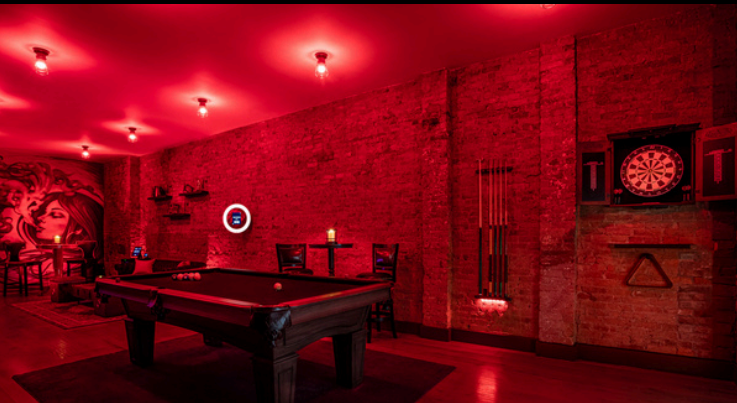
Size: 900SF | Max Capacity: 40 guests





SC Vogue – Gowanus

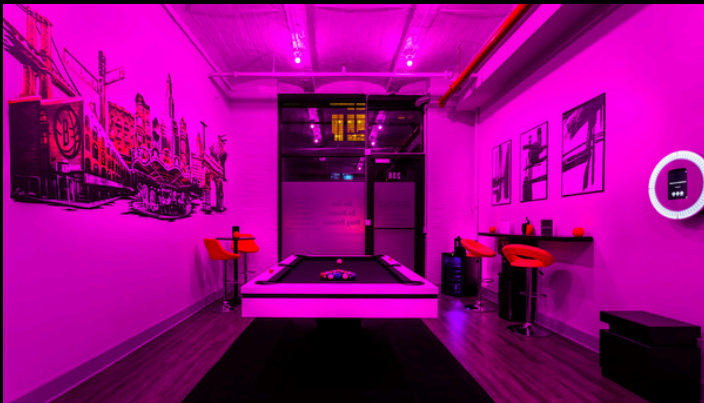
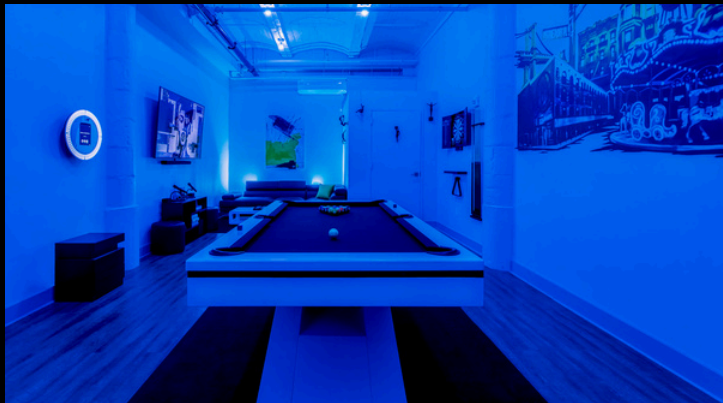
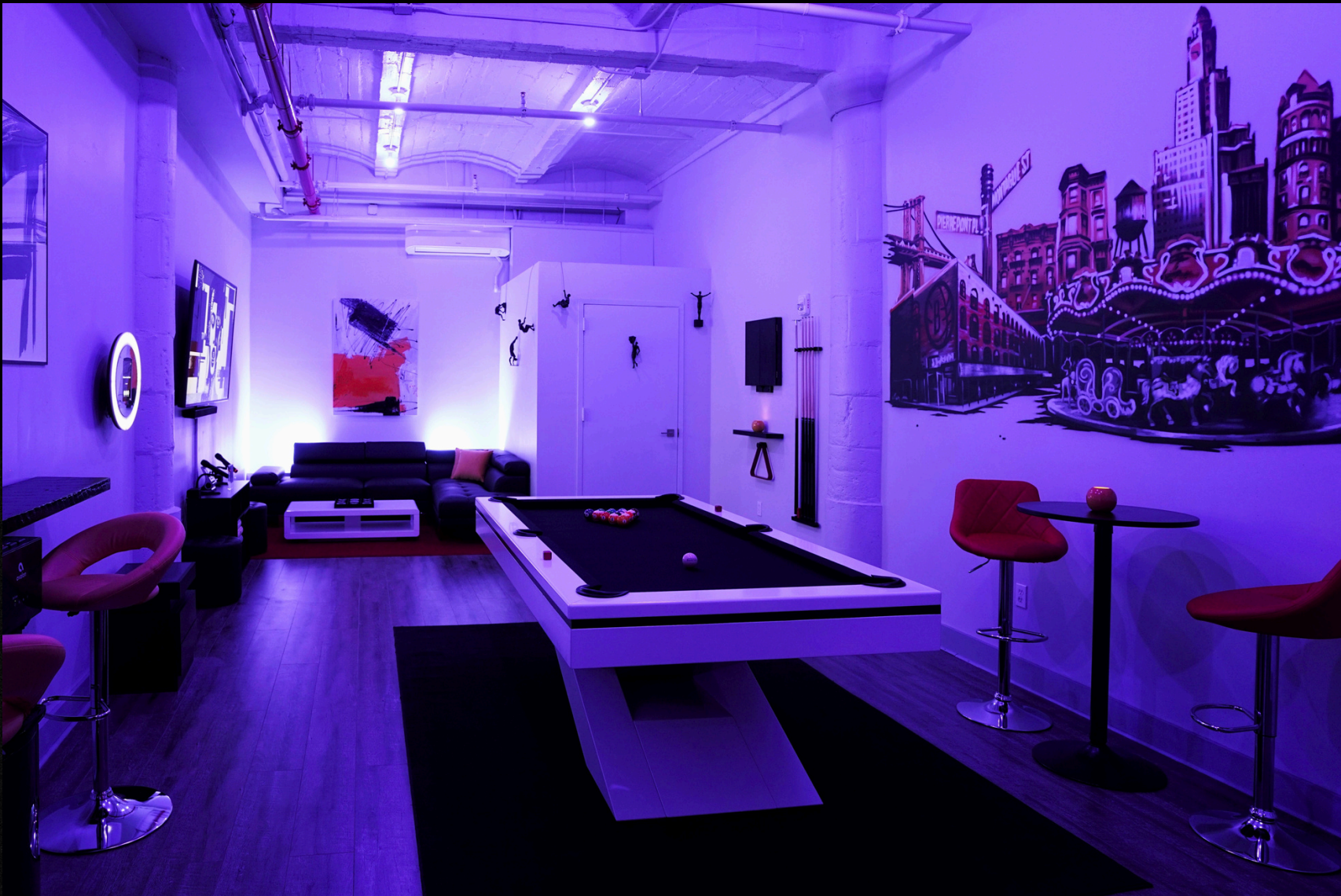
Size: 770SF | Max Capacity: 30 guests





SC The Gallery – Dumbo

Size: 550SF | Max Capacity: 25 guests





# Social Cues

Offers a new perspective on what  
your night out could be

**Go Out. Be Social. Stay Private.**

---

We have designed private entertainment lounges that anyone can book on an hourly basis, any day of the week. You get the entire venue all to yourself and decide how long for: no minimum spent, no cover charge. Venture into an art-driven private lounge where everything is available to you on demand.

All amenities are included with rental: karaoke, billiards, darts, photo booth, Jenga, Taboo and other board games, smart tech, 75" TV, sound system and more. You can bring food & beverage with you!

## VENUES

---

7 different locations  
Same amenities  
Unique individual style

Choose your VIBE!

## HOURLY RATES

---

Start at \$100 / hour  
Rates vary depending on:  
Venue of choice  
Day of the week  
Number of guests

## BOOKING

---

Go on our website  
Click "Submit an Inquiry"  
Answer a few questions  
Reserve instantly if available

## THE DAY OF

---

Get your 4-digit access via  
text, show up on time, open  
the door & have the best time  
in your own private lounge!